



Swedish bee monitoring programme -findings and scope

Susanne Ekroth
7-8 November
Madrid, Spain



Analytical scope in honey 2011-

Veterinary drugs

Chloramphenicol
Chlortetracycline
Doxycycline
Oxytetracycline
Sulfadiazine
Sulfadimethoxine
Sulfadoxine
Sulfamethazine
Sulfathiazole
Tylosin

Heavy metals

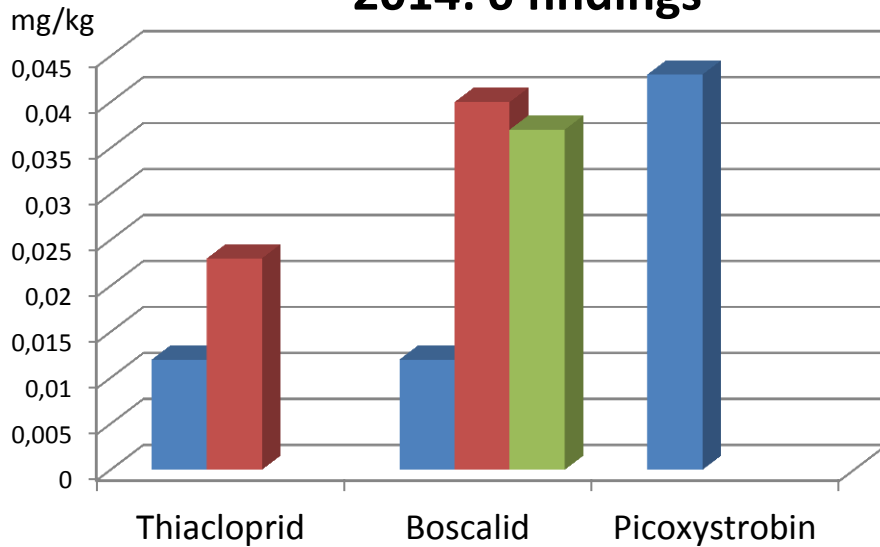
Lead
Cadmium
etc

Pesticides

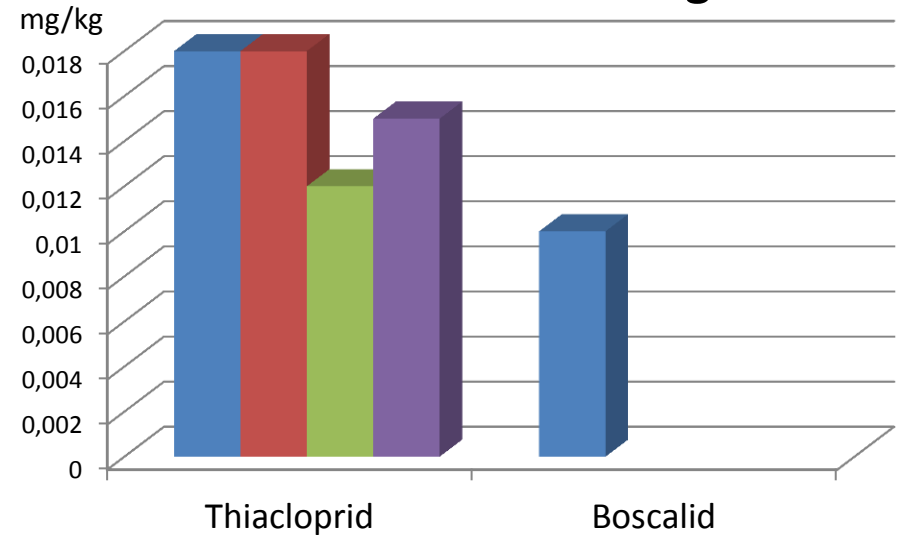
300 LC-MS/MS
150 GC-MS/MS

Pesticides in honey

2014: 6 findings



2015: 5 findings



Neonicotinoids – Colony Collapse Disorder (CCD)

- Neonicotinoids nearly 40% of global insecticide market.
- Neuro-active insecticides, chemically similar to nicotine.
- Linked to adverse ecological effects including CCD

1. Acetamiprid
2. Clothianidin
3. Imidacloprid – most widely used insecticide in the world
4. Nitenpyram
5. Nithiazine
6. Thiacloprid
7. Thiamethoxam
8. Dinotofuran

Elado		Conc (%)
Beta-Cyfluthrin	Systemic Neonicotinoid	6,51
Clothianidin	Non-systemic Pyrethroid	32,5

“Seed coating with a neonicotinoid insecticide negatively affects wild bees

Oilseed rape fields in southern Sweden



*“Elado, applied to oilseed rape seeds, reduced **wild bee** density, **solitary bee** nesting, and **bumblebee** colony growth and reproduction under field conditions.”*

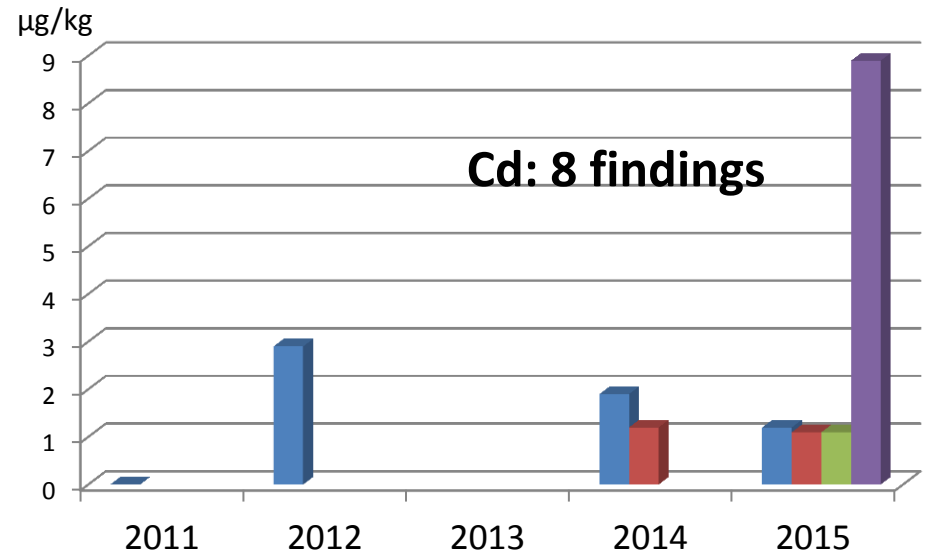
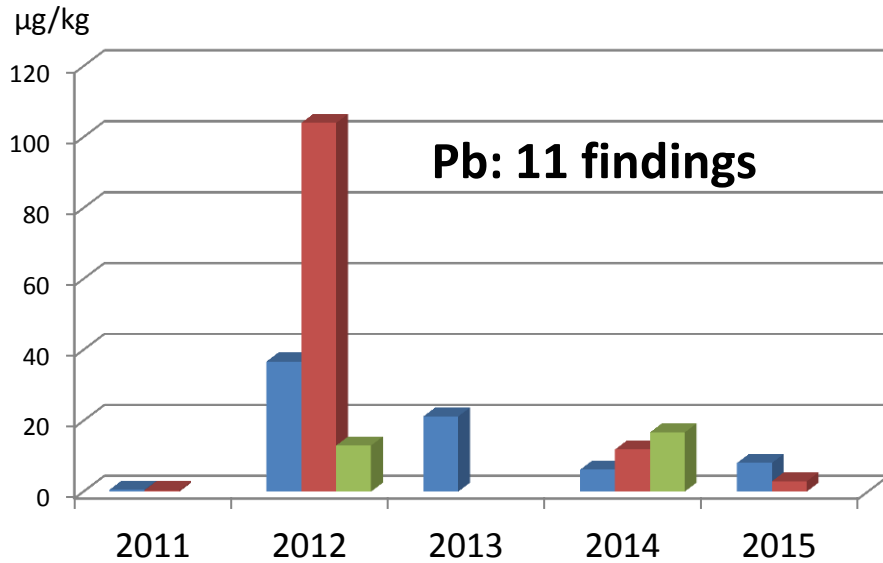
Rundlöf et al

	○ Control (n = 8 fields*)		● Insecticide seed coating (n = 8 fields)		LOD [†]	LOQ [‡]
	Detected in n samples	Highest concentration	Detected in n samples	Highest concentration		
Honey bee pollen (ng/g)						
Acetamidrid (n)	1	0.34	0		0.080	0.24
Clothianidin (n)	0		8	23	0.50	1.5
Imidacloprid (n)	1	0.23 [‡]	0		0.30	0.90
Thiacloprid (n)	3	1.4 [§]	4	0.29	0.070	0.21
			0		1.0	
			0		0.033	0.10
			8	16	0.17	0.50
			0		0.17	0.50
			2	0.044	0.033	0.10
			0		0.17	0.50

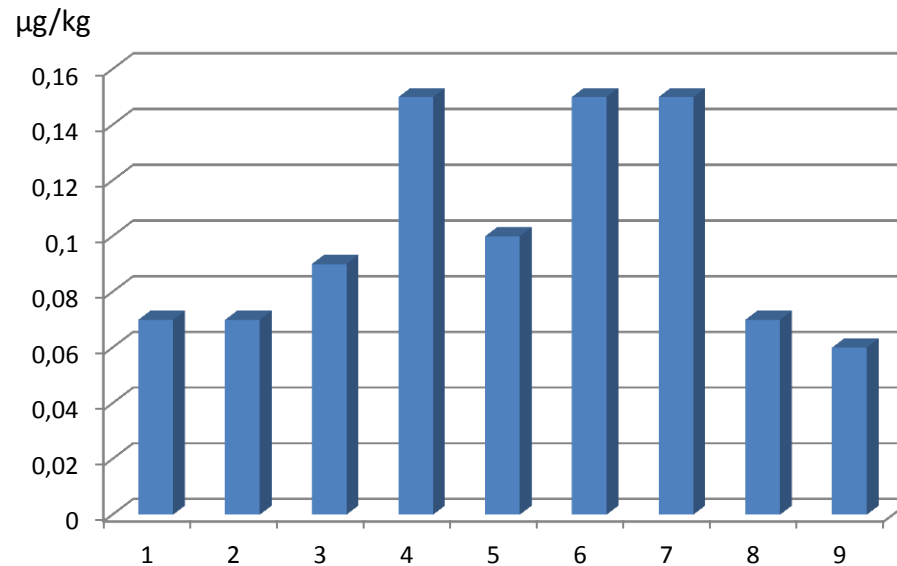
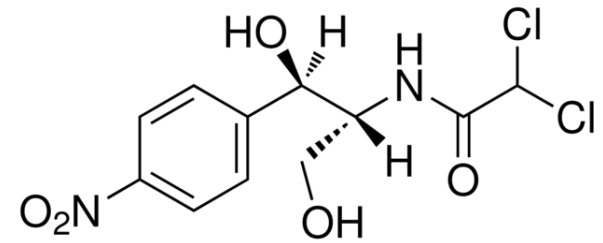
Residues of neonicotinoids (n) and a pyrethroid (p) in bee-collected pollen and nectar from control fields and fields sown with insecticide treated seeds.

“Our findings have important implications for policies regulating the use of neonicotinoids and risk assessments of pesticides.”

Heavy metals in honey

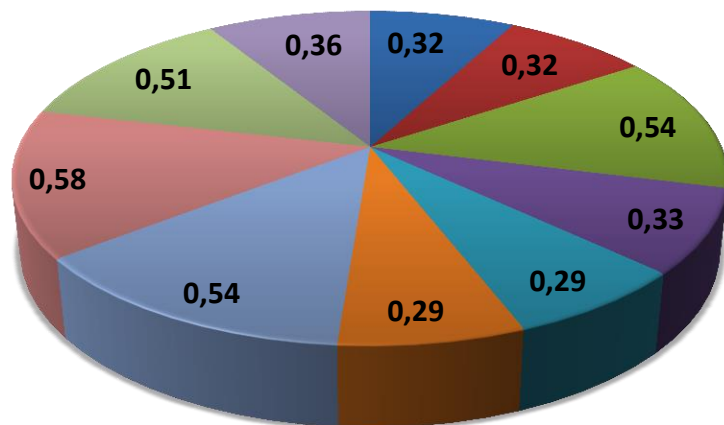
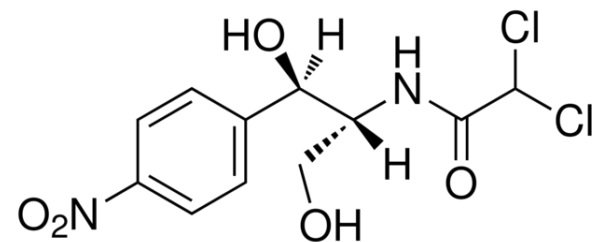


Chloramphenicol



Reported findings of Chloramphenicol from 2011—2014 in honey in Sweden.

Chloramphenicol



Imported beeswax from China containing Chloramphenicol (ug/kg) 2014.
Beeswax to Swedish factory dealing beeswax, candles, wax impregnated cloths.

RASFF 2014.

Import of beewaxes from China

CCNE.mofcom.gov.cn

中文



CHINA COMMODITIES

Keyword



product manufacturer HS

HOME > Manufacturer

Profile

Products/Services We Offer: Honey, Beeswax, Royal jelly, Propolis, Bee equipment, Bee pollen

Primary Business Type: Manufacturer
Trader

Code for Imp. & Exp.: No Supply

Business Started In: 01 1

Number of Employees: 90

Last updated: a year ago

[UPDATE NOW](#)

Contact

Company: Dalian Sangdi Honeybee Co., Ltd.

Address: Rm. 2203, Tower A, Anda Mansion, No. 74, Luxun Road, Zhongshan, Dalian, Liaoning, China

Zip Code: 116001

Liaison: Miss Ma

Job Title: Manager

Telephone: +86-411-82712121 +86-411-82712323

Fax: Members Only

E-mail: Members Only

Website: <http://www.sangdi.com>

Dalian Sangdi Honeybee Co., Ltd.



HONEY

H.S CODE: 04090000

Model:

Export area:North America ASIA Europe Africa

Introduction:

Sangdi Honeybee aims to produce only the very highest quality products. All of our honey is sourced from registered Chinese beekeepers, and is guaranteed to be free of contaminants and chemical residues. State of the art equipment and technology, advanced management guarantees this commitment to a consistent top quality, as is shown by our MOODY accredited, HACCP certification, as well as HALAL certification.



BEE SWAX

H.S CODE: 15219010

Model:

Export area:North America Europe

Introduction:

Sangdi's beeswax fully conforms to international standard such as US PHORM and EUROPEAN BP. It can carry out Hydrocarbon and Chromatogram tests; Sangdi exports 500MT beeswax per year, which is one of the largest amounts in China; Sangdi's beeswax enjoys a good reputation among its customers.



ROYAL JELLY

H.S CODE: 2106903090

Model:

Export area:North America ASIA Europe

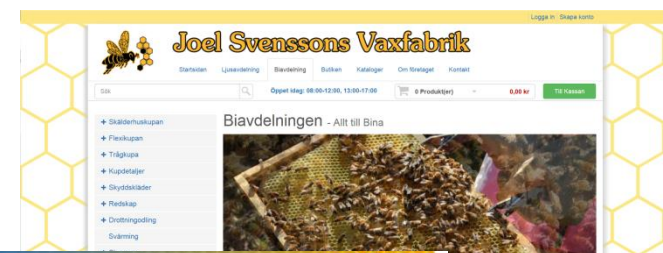
Introduction:

Sangdi's Fresh Royal Jelly is pure, natural and fresh to be

Import of 12 000 kg beewaxes from Dalian Sangdi Honeybee Co, Zhejiang Dalian, China



Beeswax





MS Biredskapsfabriken

Tel 0506-102 73 Fax 0506-100 04 info@biredskapsfabriken.se

Start page
Delivery terms
The company
How to shop
Search package

- Product categories
- Beeswax
 - Beehives
 - Hive accessories
 - Glass jars, packaging
 - Honey handling
 - Tools
 - Clothes
 - Feeding, bee pharmacy
 - Literature
 - Queen bee breeding
 - Hygiene products
 - Candle making
 - Gifts
 - Other material
 - Catalogs
 - SALE

WE BUY YOUR BEESWAX!

65 SEK/KG, VAT EXCLUDED

Welcome to our shop in Töreboda on 300 m²

Opening hours:

Mon 9:00-18:00, Tis-FFre 9:00-16:00 closed for lunch 12:30-13:30


Our range includes more than 4000 items you can have delivered right to you. In our online store, you can shop around the clock, all year round, easily with fast delivery.

Shopping basket

Total: 0 kr

Checkout >>

News



Glass bottle 500 ml, with 43 mm lid

Price 96.56:-




Plastic scraper, large

Price 23.00:-



Bucket support, wide model

Price 214.00:-



My beekeeping - workbook for study leaders

Price 171.00:-

Campaign



Ceramic mug, 12 pieces

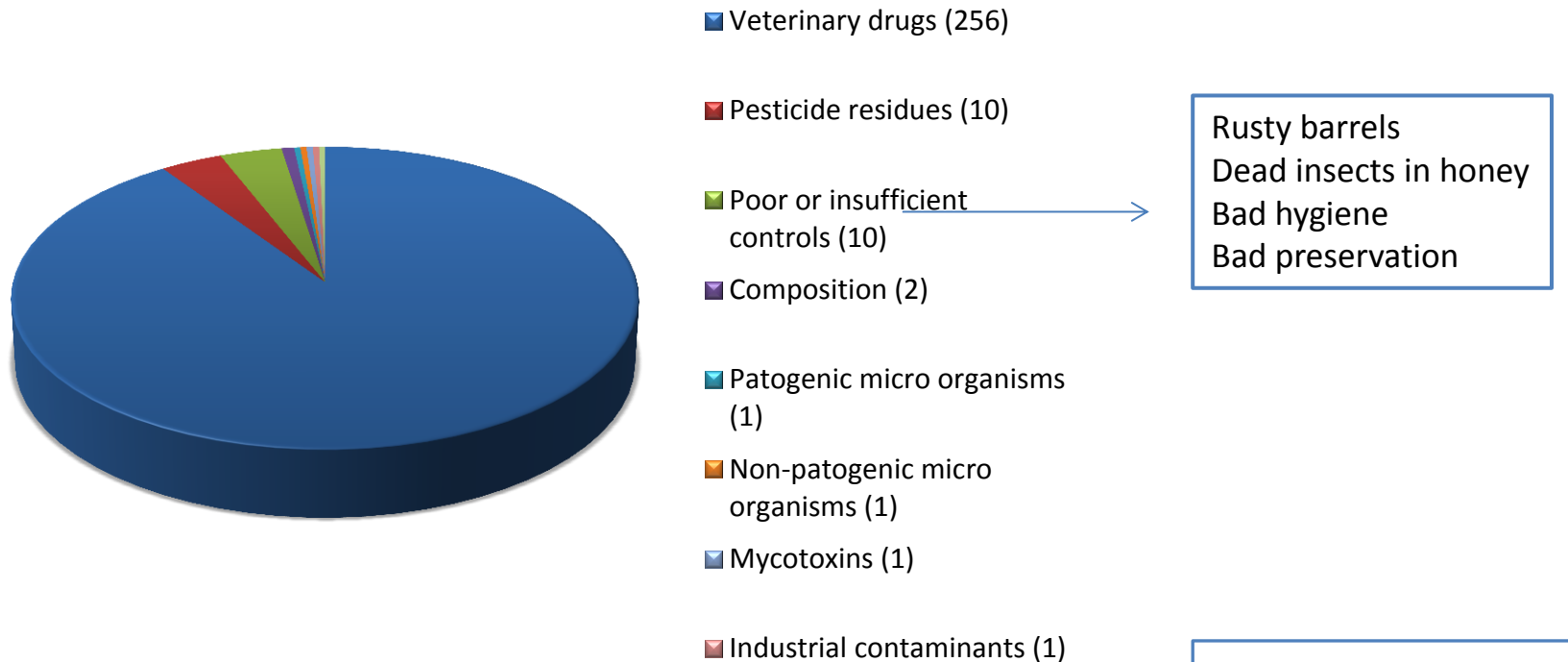
**300.00:-
360.00:-**

 Oxalic acid 35.00:- More info	 Beeswax sheets 150.00:- More info	 Formic acid evaporator professional 205.00:- More info	 Formic acid applicator 52.00:- More info
---	---	---	--



RASFF notifications 2006—2016

Honey and royal jelly

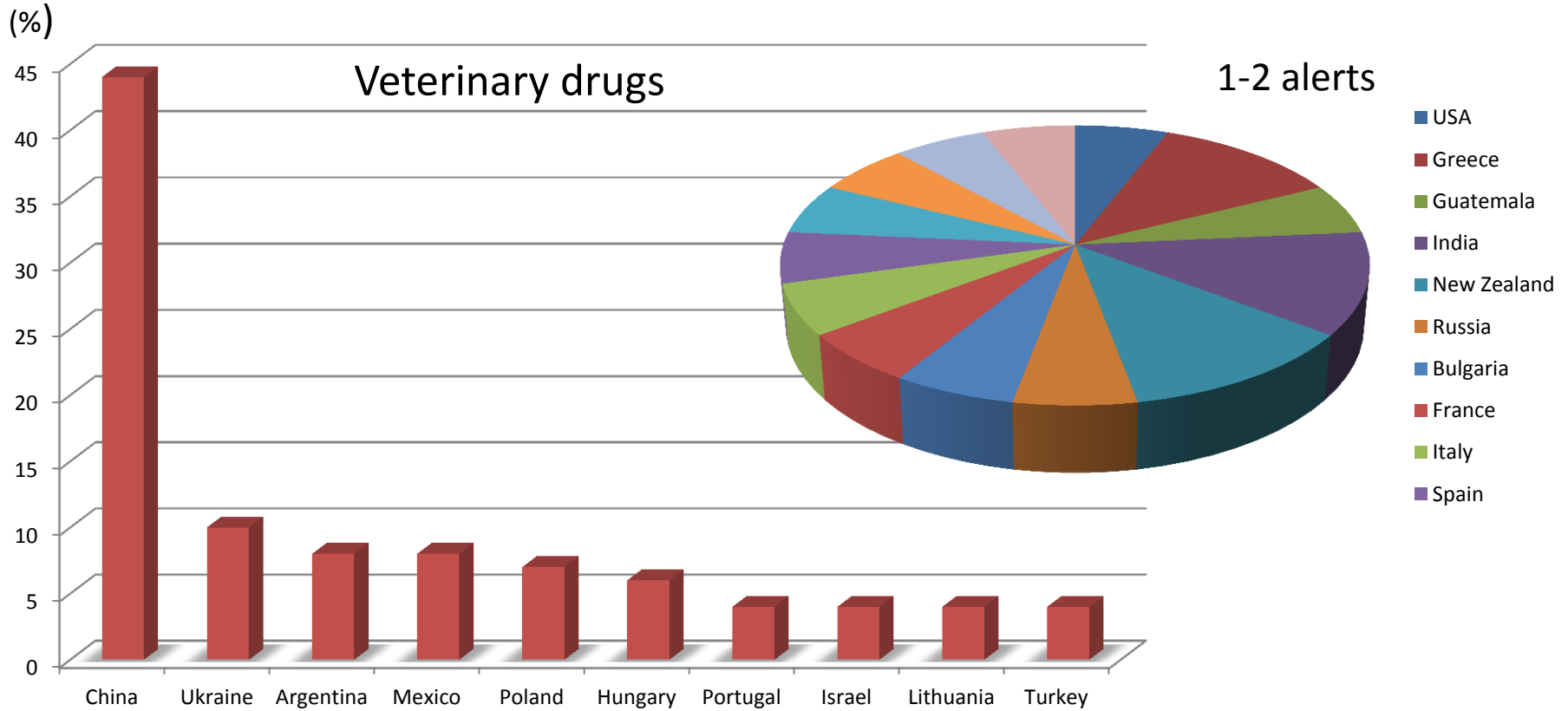


Rusty barrels
Dead insects in honey
Bad hygiene
Bad preservation

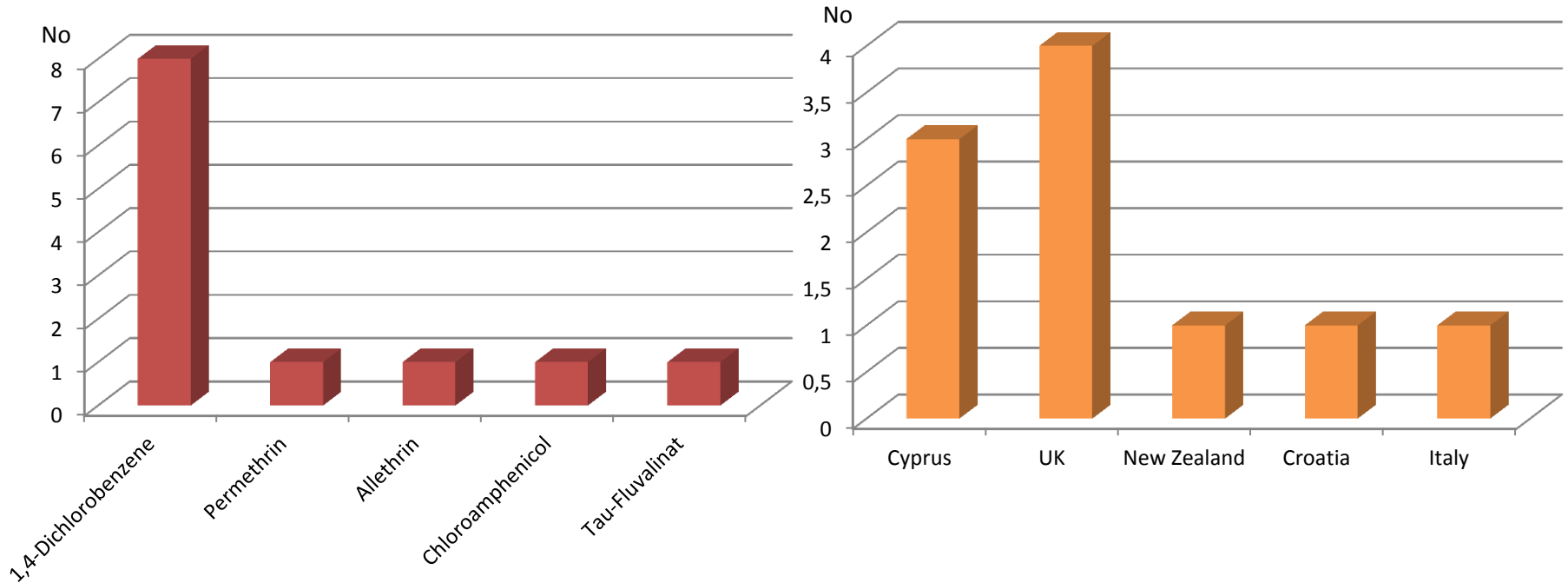
No alerts
Parasitic infestation
Heavy metals
Chemical contamination
Biotoxins

RASFF – produced by

Alert 10 top list



RASFF notifications 2006-2016 for pesticides



Monitoring in Nordic Countries

Analyses of 20-30 samples per year for both antibiotics and pesticides.

- **Norway**, one finding 2012 with **DDT** 0,014 mg/kg from Ethiopia
- **Denmark**, no findings of pesticides over MRL
- **Finland, Sulfoamines**. Scope for pesticides has increased from <30 (2014) to 120 pesticides (2016). In addition analyses with findings of **Dimethoat** (200-600 ug/kg), **Clothianidine**, **Thiacloprid**, **Lamda-Cyhalotrin** (low levels but in most sample).

Thank you for your attention!

